

RV Slammers Orange G99

Rainier Valley Slammers

Auburn, WA

G99 total strength=1179

attack=2.28 defense=6.08

fall league = RCL G99 Div 3, Spr RCL G99 Div

notes= Dorman 2013

alt names used:

RV Slammers Orange [G99]

RAINIER VALLEY SLAMMERS RVS G99 ORA

RVSG99ORANGE (WA)

RVS Slammers G99 Dorman

RVS G99 Orange

Venues played:

RVS Classic GU14

Nike Crossfire Challenge Silver U14

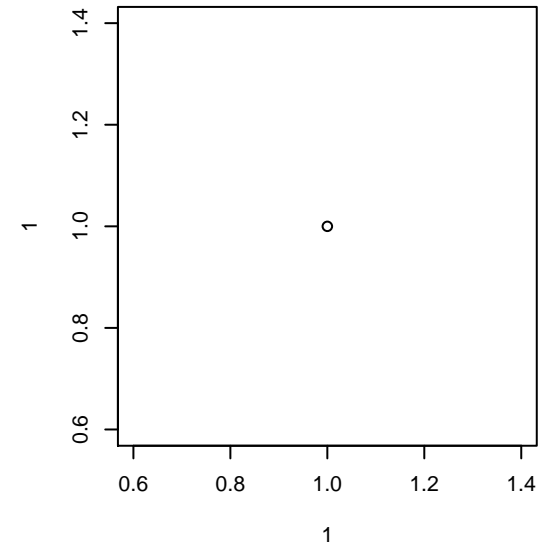
SeaTac Cup U14 U14

RCL G99 Div 3

PacNW Winter Classic Premier II U14

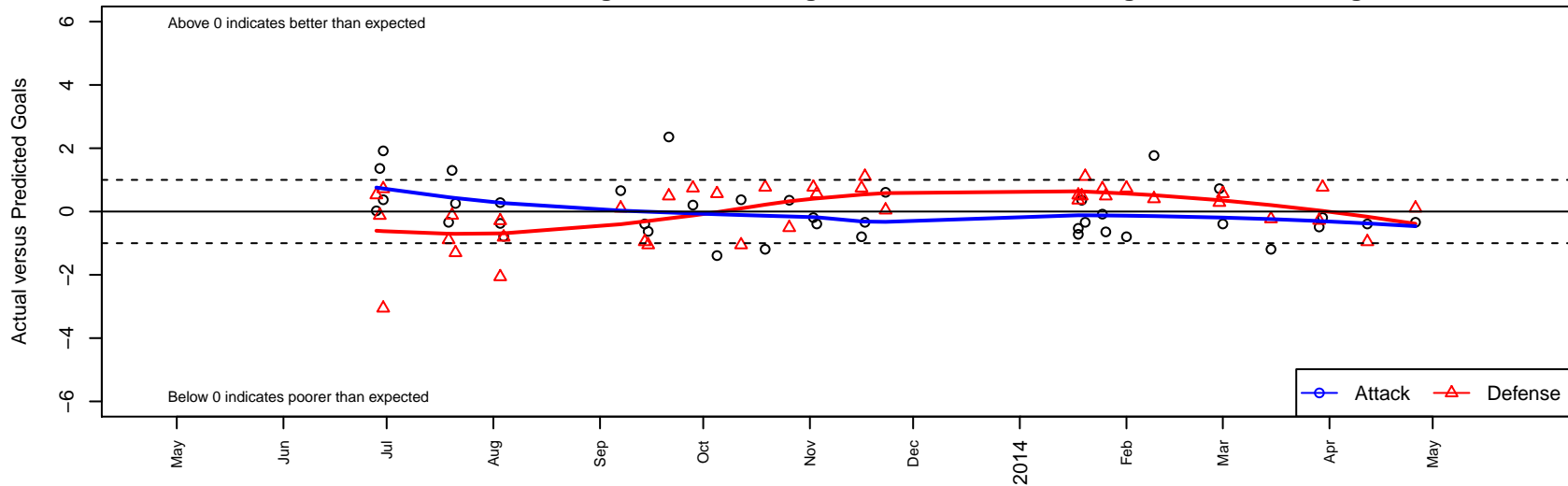
Spr RCL G99 Div 3

Challenge Cup G99 Division 1 – Challenge 1



RV Slammers Orange G99

Dots are actual minus expected GF (blue circles) and GA (red triangles).
Blue line is smoothed change in attack strength. Red is smoothed change in defense strength.



| | date | home | | away | | venue | pred.home | pred.away |
|-------|-------------|-----------------------------|---|--------------------------|---|--|------------------|------------------|
| 16808 | 2014-04-26 | RV Slammers Orange G99 | 0 | FC Alliance A G99 | 1 | Challenge Cup G99 Division 1 – Challenge 1 | 0.34 | 1.11 |
| 16672 | 2014-04-12 | Seattle United Tango G99 | 2 | RV Slammers Orange G99 | 0 | Challenge Cup G99 Division 1 – Challenge 1 | 1.05 | 0.39 |
| 16493 | 2014-03-30 | Harbor Premier Green G99 | 0 | RV Slammers Orange G99 | 1 | Challenge Cup G99 Division 1 – Challenge 1 | 0.77 | 1.19 |
| 16440 | 2014-03-29 | RV Slammers Orange G99 | 0 | Eastside FC White G99 | 1 | Challenge Cup G99 Division 1 – Challenge 1 | 0.49 | 0.72 |
| 16347 | 2014-03-15 | RV Slammers Orange G99 | 0 | Harbor Premier Green G99 | 1 | Spr RCL G99 Div 3 | 1.19 | 0.77 |
| 16120 | 2014-03-01 | RV Slammers Orange G99 | 1 | WPFC White G99 | 0 | Spr RCL G99 Div 3 | 1.39 | 0.56 |
| 16063 | 2014-02-28 | RV Slammers Orange G99 | 2 | PacNW White G99 | 0 | Spr RCL G99 Div 3 | 1.28 | 0.29 |
| 15929 | 2014-02-09 | Whatcom FC Rangers Blue G99 | 0 | RV Slammers Orange G99 | 3 | Spr RCL G99 Div 3 | 0.40 | 1.23 |
| 15903 | 2014-02-01 | Westsound FC Red G99 | 0 | RV Slammers Orange G99 | 0 | Spr RCL G99 Div 3 | 0.74 | 0.80 |
| 15880 | 2014-01-26 | Eastside FC Blue G99 | 0 | RV Slammers Orange G99 | 0 | Spr RCL G99 Div 3 | 0.49 | 0.64 |
| 15873 | 2014-01-25 | NWN Blue G99 | 0 | RV Slammers Orange G99 | 1 | Spr RCL G99 Div 3 | 0.72 | 1.08 |
| 15849 | 2014-01-20 | RV Slammers Orange G99 | 0 | FC Alliance A G99 | 0 | PacNW Winter Classic Premier II U14 | 0.34 | 1.11 |
| 15827 | 2014-01-19 | Eastside FC Blue G99 | 0 | RV Slammers Orange G99 | 1 | PacNW Winter Classic Premier II U14 | 0.49 | 0.64 |
| 15792 | 2014-01-18 | RV Slammers Orange G99 | 1 | Blackhills FC Black G99 | 0 | PacNW Winter Classic Premier II U14 | 1.53 | 0.36 |
| 15798 | 2014-01-18 | MVP Marauders Navy G99 | 0 | RV Slammers Orange G99 | 1 | PacNW Winter Classic Premier II U14 | 0.52 | 1.72 |
| 15546 | 2013-11-23 | RV Slammers Orange G99 | 1 | Seattle United Tango G99 | 1 | RCL G99 Div 3 | 0.39 | 1.05 |
| 15486 | 2013-11-17 | RV Slammers Orange G99 | 0 | FC Alliance A G99 | 0 | RCL G99 Div 3 | 0.34 | 1.11 |
| 15436 | 2013-11-16 | Westsound FC Red G99 | 0 | RV Slammers Orange G99 | 0 | RCL G99 Div 3 | 0.74 | 0.80 |
| 15209 | 2013-11-03 | RV Slammers Orange G99 | 1 | WPFC White G99 | 0 | RCL G99 Div 3 | 1.39 | 0.56 |
| 15117 | 2013-11-02 | RV Slammers Orange G99 | 1 | Harbor Premier Green G99 | 0 | RCL G99 Div 3 | 1.19 | 0.77 |
| 14930 | 2013-10-26 | Eastside FC Blue G99 | 1 | RV Slammers Orange G99 | 1 | RCL G99 Div 3 | 0.49 | 0.64 |
| 14745 | 2013-10-19 | Harbor Premier Green G99 | 0 | RV Slammers Orange G99 | 0 | RCL G99 Div 3 | 0.77 | 1.19 |
| 14517 | 2013-10-12 | RV Slammers Orange G99 | 1 | WA Rush Nero G99 | 2 | RCL G99 Div 3 | 0.63 | 0.95 |
| 14325 | 2013-10-05 | WPFC White G99 | 0 | RV Slammers Orange G99 | 0 | RCL G99 Div 3 | 0.56 | 1.39 |
| 14103 | 2013-09-28 | RV Slammers Orange G99 | 1 | Westsound FC Red G99 | 0 | RCL G99 Div 3 | 0.80 | 0.74 |
| 13868 | 2013-09-21 | RV Slammers Orange G99 | 3 | Eastside FC Blue G99 | 0 | RCL G99 Div 3 | 0.64 | 0.49 |
| 13732 | 2013-09-15 | WA Rush Nero G99 | 2 | RV Slammers Orange G99 | 0 | RCL G99 Div 3 | 0.95 | 0.63 |
| 13655 | 2013-09-14 | Seattle United Tango G99 | 2 | RV Slammers Orange G99 | 0 | RCL G99 Div 3 | 1.05 | 0.39 |

| | date | home | | away | | venue | pred.home | pred.away |
|-------|-------------|-------------------------------|---|--------------------------|---|-------------------------------------|------------------|------------------|
| 13445 | 2013-09-07 | FC Alliance A G99 | 1 | RV Slammers Orange G99 | 1 | RCL G99 Div 3 | 1.11 | 0.34 |
| 12809 | 2013-08-04 | RV Slammers Orange G99 | 1 | SSC Shadow C G99 | 1 | SeaTac Cup U14 U14 | 1.79 | 0.19 |
| 12751 | 2013-08-03 | RV Slammers Orange G99 | 1 | Tynecastle FC A G99 | 1 | SeaTac Cup U14 U14 | 0.72 | 0.71 |
| 12756 | 2013-08-03 | RV Slammers Orange G99 | 0 | Eastside Timbers Red G00 | 3 | SeaTac Cup U14 U14 | 0.37 | 0.94 |
| 12551 | 2013-07-21 | Crossfire OR LOSC Freedom G99 | 2 | RV Slammers Orange G99 | 1 | Nike Crossfire Challenge Silver U14 | 0.70 | 0.74 |
| 12496 | 2013-07-20 | RV Slammers Orange G99 | 2 | Spokane Foxes Red G99 | 1 | Nike Crossfire Challenge Silver U14 | 0.70 | 0.88 |
| 12435 | 2013-07-19 | FC Alliance A G99 | 2 | RV Slammers Orange G99 | 0 | Nike Crossfire Challenge Silver U14 | 1.11 | 0.34 |
| 12302 | 2013-06-30 | RV Slammers Orange G99 | 3 | NWN Blue G99 | 0 | RVS Classic GU14 | 1.08 | 0.72 |
| 12305 | 2013-06-30 | RV Slammers Orange G99 | 1 | WA Rush Nero G99 | 4 | RVS Classic GU14 | 0.63 | 0.95 |
| 12289 | 2013-06-29 | RV Slammers Orange G99 | 2 | WPFC Fury Black G99 | 1 | RVS Classic GU14 | 0.64 | 0.88 |
| 12267 | 2013-06-28 | Seattle United NE Blue G99 | 0 | RV Slammers Orange G99 | 1 | RVS Classic GU14 | 0.53 | 0.98 |